

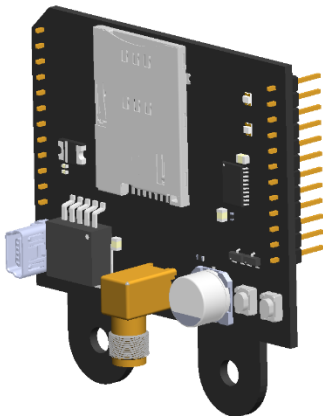
Pump Control Modem

Rover Connect - MAX

The Rover Systems Pump Control Modem is a great starting point for individuals or companies looking to implement pump automation, Simple text based command structure with features specific to water management and irrigation.

Operational Features

- Text Message Start and Stop Command
- Latched Relay Control and Pulsed Start and Stop Relay
- Run Timer Set in Message
- Acknowledgement Message
- Running and Stopped Message
- Status Request Message
- 0-10v Signal for PID or Speed Control
- Din 1 Safety Input (provided external shutdown option)
- Din 2 Running Input with Safety Shutdown Timeout
- 12vdc or 24vdc Supply Voltage



Designed for the Future

The Rover Pump Modem is designed with the future in mind. The modular nature of the Rover Controller platform means modules can be swapped out or replaced as needed.

For example – should there be a need to upgrade from 4g to Wifi or 5G the communication module can be swapped out.

Message Structure

Controlling your pump from your phone has never been easier! Message structure is explained below.

Item	Message	Description
1	Pump[X] Start	Sends Start Command
2	Pump[X] Stop	Sends Stop Command
3	Pump[X] Start hh:mm	Send Start Command and Set Run Timer
4	Pump[X] Start xx%	Send Start and set VFD Pot or PID Source
5	Pump[X] Start hh:mm xx%	Send Start and Set Run Timer and VFD POT or PID
6	Pump[X] ?	Returns status, including remaining run time
8	[PIN] Slot [X] 041x xxx xxx	Send the listed number to the address book
9	Slot [X] On	Enable the Phone number in the slot
10	Slot [X] Off	Disable the Phone number in the slot

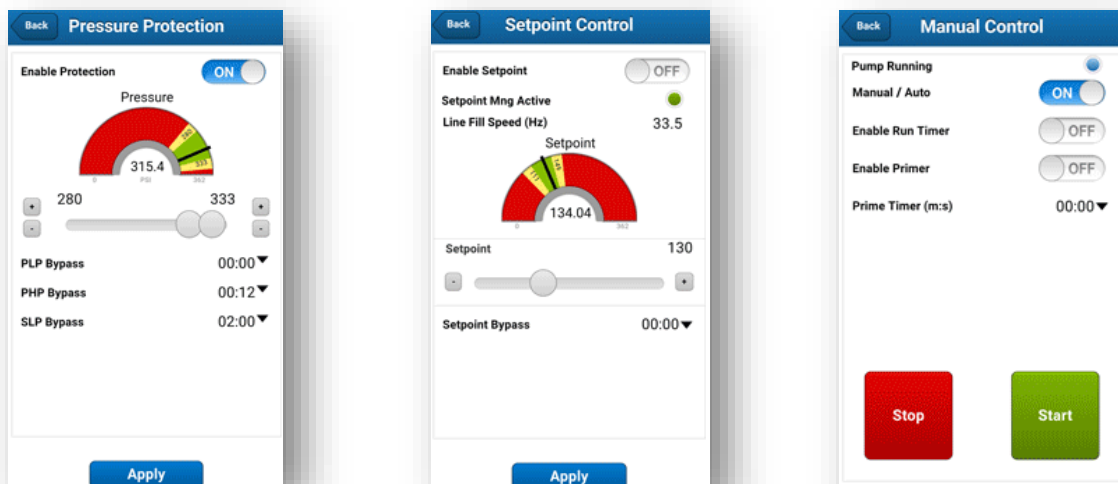
(Slots: The term used to explain the location where phone numbers of enabled users are stored)

Battery Back Up

The Rover Pump Control Modem's battery backup feature notifies users in the address book if the power is cut. Monitoring both the power line and the pump running line sends a message to the user if the power is interrupted during pumping.

Mobile Application Upgradable

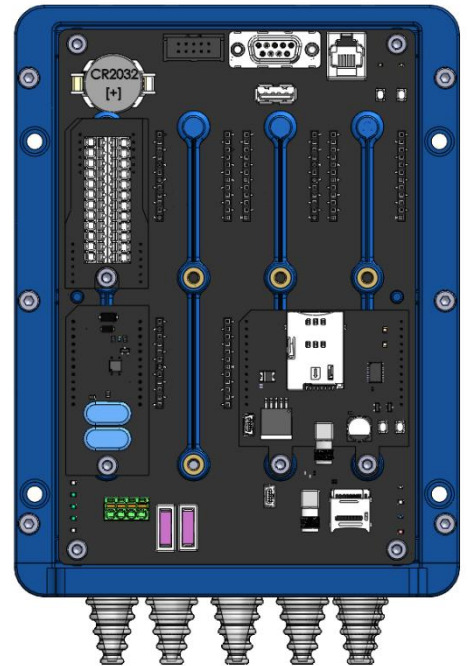
You can upgrade the standard Rover Pump Control Modem to Rover Pump Lite anytime. Rover Pump Lite is a Mobile Device Application that provides real-time control and monitoring of your pump. It provides start and stop functionality, along with pressure and temperature protection, runtime, and duty control for VFD speed or pressure management.



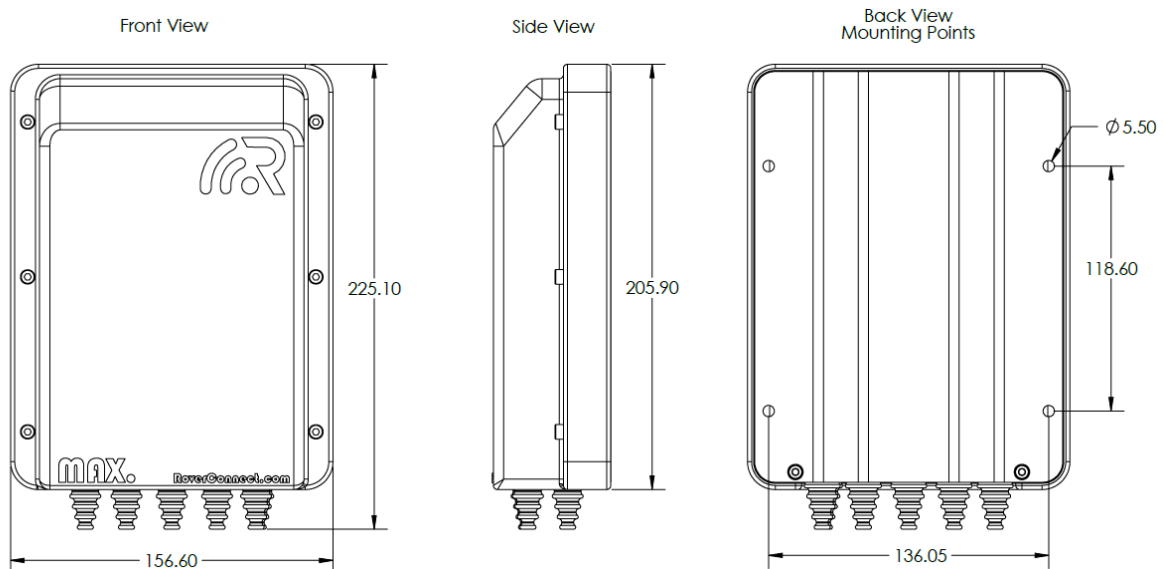
Modular Hardware Design

The controller board has been designed with flexibility and adaptability in mind. Fitted with four pump control interface cards, the Pump Control Modem or Rover Pump Lite can control and monitor four pumps from one controller.

Additionally, an ethernet can be connected to allow Modbus TCP/IP connectivity to VFDs or other compatible devices.



Controller Physical Size



Contact Details

Contact Rover Systems today to discuss the Rover Pump Control Modem or any other Controllers in the range; email Sales@roverconnect.com for more information.